

Technical Data Sheet F Series

Basic Info

KSFF76x1600-R KSFF76x1300-R KSFF76x1000-R KSFF76x800-R

Nominal length (mm)

1600 1300 1000 800

Tube diameter (mm)

76,10 76,10 76,10 76,10

Weight (kg)

12,00 7,50 6,00 4,50

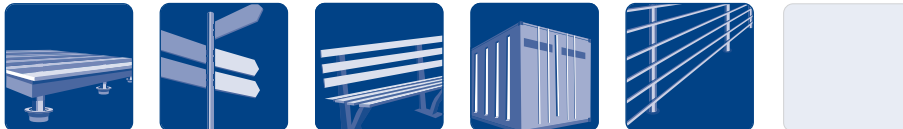
Item number

25478 25477 25476 25475

Construction

- Flange: Sheet metal S355
- Continuous welded helix
- Coating: Hot-dip galvanized according to DIN EN ISO 1461

Applications



Accessories



Post Bearer easy connector system-R
Item No. 28005



Post Bearer Plane-R
Item No. 28006



Post Bearer M24-R
Item No. 28007



Post Bearer Side Flaps-R
Item No. 28010



Post Bearer Vario PS 150-R
Item No. 28019



KSFF F 76x1300-R



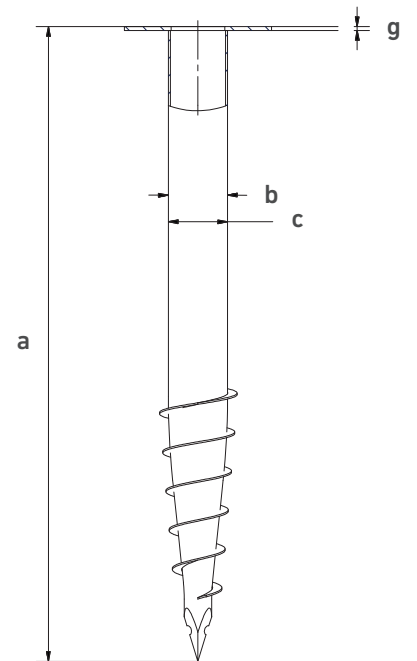
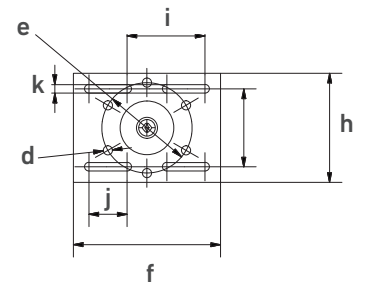
Subject to technical change!

Krinner Schraubfundamente GmbH | Passauer Straße 55 | D-94342 Straßkirchen
Phone: +49 9424 9401-80 | E-Mail: service@krinner.com | www.krinner.io

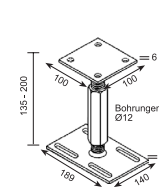
sustainable · durable · revolutionary

Technical Data

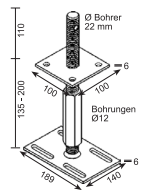
	KSFF76x1600-R	KSFF76x1300-R	KSFF76x1000-R	KSFF76x800-R
a	Length (mm) (± 25 mm)			
	1575	1275	1045	815
b	Shaft outer diameter (mm)			
	76,10	76,10	76,10	76,10
c	Inner diameter (mm)			
	68,00	68,00	68,00	68,00
d	Hole diameter (mm)			
	6 x \varnothing 11	6 x \varnothing 11	6 x \varnothing 11	6 x \varnothing 11
e	Pitch circle diameter (mm)			
	116	116	116	116
f	Flange length (mm)			
	189	189	189	189
g	Flange thickness (mm)			
	5	5	5	5
h	Flange width (mm)			
	140	140	140	140
i	Oblong hole grid size (mm)			
	100	100	100	100
j	Oblong hole length (mm)			
	49	49	49	49
k	Oblong hole diameter (mm)			
	11	11	11	11



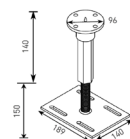
Post Anchor:



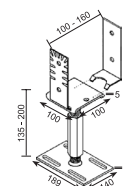
Flat R



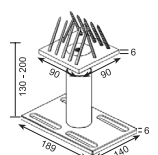
M24-R



Easy connector system-R



Side Tabs R



Vario PS 150-R

Subject to technical change!

Krinner Schraubfundamente GmbH | Passauer Straße 55 | D-94342 Straßkirchen
Phone: +49 9424 9401-80 | E-Mail: service@krinner.com | www.krinner.io