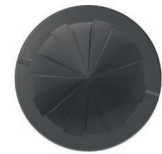


Technical Data Sheet K Series

Basic Info

KSF K 60x800	KSF K 42x650	KSF K 34x550
Nominal length (mm)		
800	650	550
Weight (kg)		
1,00	0,60	0,35
Item number		
22080	22065	22000



KSF K 60x800

Construction

- Material: PP-EPDM
- UV-stabilized
- Conical plastic shell with screw thread
- Surface matt black

Applications



Accessories



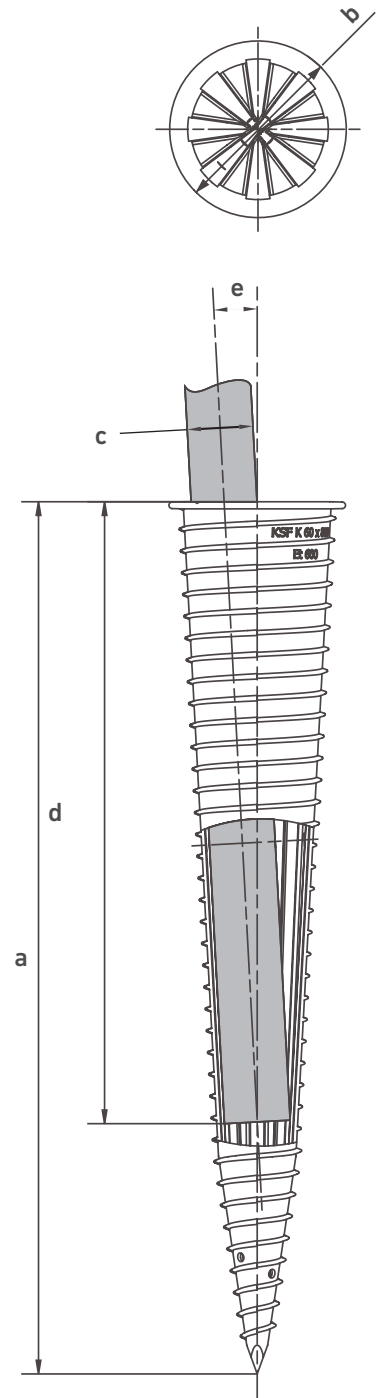
Special Granulate
1500 g
Item No. 21824



Special Granulate
500 g
Item No. 21823

Technical Data

	KSF K 60x800	KSF K 42x650	KSF K 34x550
a Length (mm)	800	650	550
b Outer diameter (mm)	163	136	98
c Diameter setting (mm)	75 60x40 = Ø 72 70 60 48 42 34	48 42 34	42 34
d Depth setting (mm)	425 470 480 575 640 660 690	455 500 530	325 400
e Alignment range	3°	2,7°	2,5°



Subject to technical change!

Krinner Schraubfundamente GmbH | Passauer Straße 55 | D-94342 Straßkirchen
 Phone: +49 9424 9401-80 | E-Mail: service@krinner.com | www.krinner.io